



712 Fifth Avenue

RENOVATION TOWN HALL

September 5, 2018

The Paramount Group Team

Construction & Development

- Matthew Bautista, Vice President
- Andrew Sgro, Director

Leasing

- Douglas Neye, Senior Vice President
- Sean Kirk, Director

Property Management

- Jenna Fantauzzi, Property Manager
- Carol Scali, Senior Associate
- Kevin Tan, Associate
- Kevin Daly, Chief Engineer
- Frank Olsen, Assistant Chief Engineer
- Andrew Burns, Director of Security
- Sharon Faulkner, Security Supervisor

RENOVATION TEAM

Owner/Manager

• Paramount Group, Inc.

Architect

• KPF

General
Contractor

• AECOM Tishman

Elevator
Modernization

• Schindler Elevator

712

Commercial Observer

August 14 – Sept 3, 2018

Fifth Avenue's Most Private Address.

A Plaza District Classic, Reimagined.

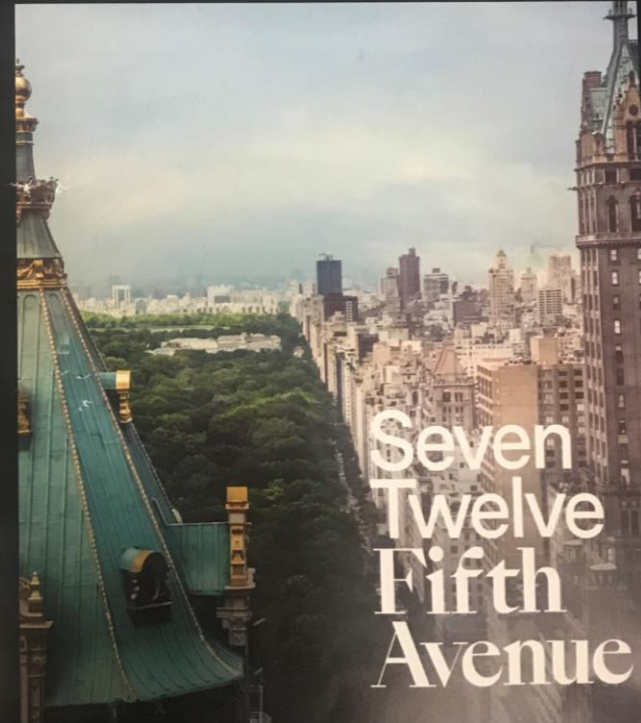
Powerful and grandly intimate, the timeless building at 712 5th Avenue is a pillar of Midtown prestige with quintessential Central Park views. To inspire a new era of excellence in the Plaza District, original architects Kohn Pedersen Fox return to create stunning upgrades and a bold lobby renovation, inviting the next generation of prominent players to make their ascent.

Each floor offers an intimate 9,800 RSF, with partial to full floors available.

712

Commercial Observer

August 14 – Sept 3, 2018



PROJECTS

Lobby Renovation

Elevator Modernization / Destination Dispatch

Façade Repairs / Local Law 11

Fire Alarm Upgrade

KPF

Hugh Trumbell, Principal

712 FIFTH AVENUE



712 FIFTH AVENUE



EXISTING CONDITION



ENTRANCE AT 56TH STREET

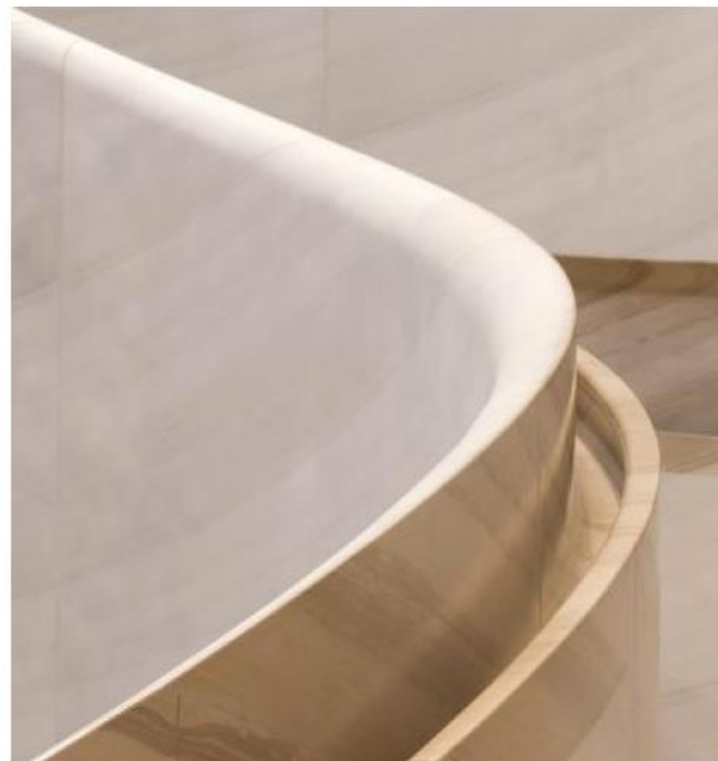


HENRI BENDEL AT FIFTH AVENUE

EXISTING CONDITION



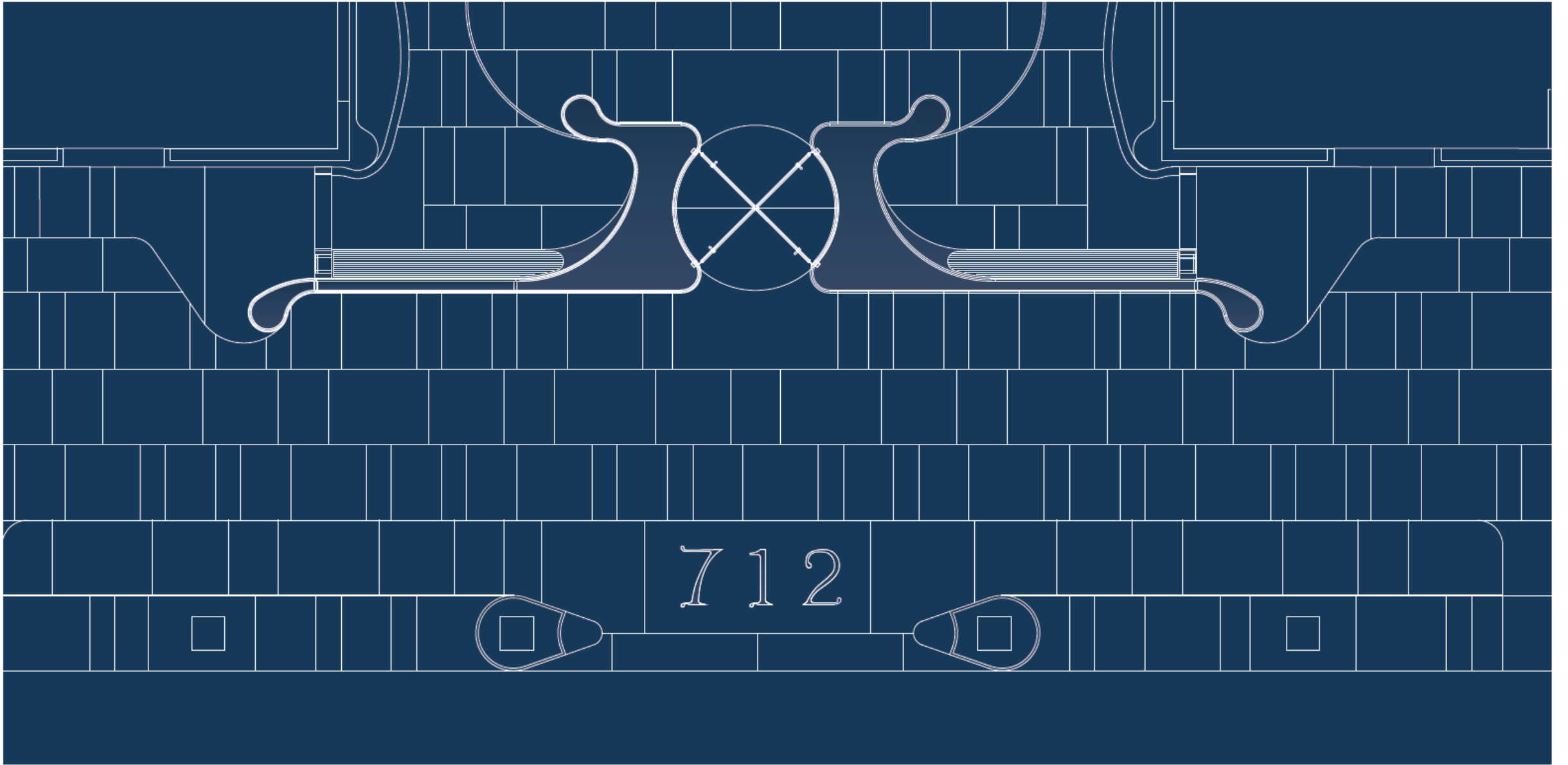
CONCEPT



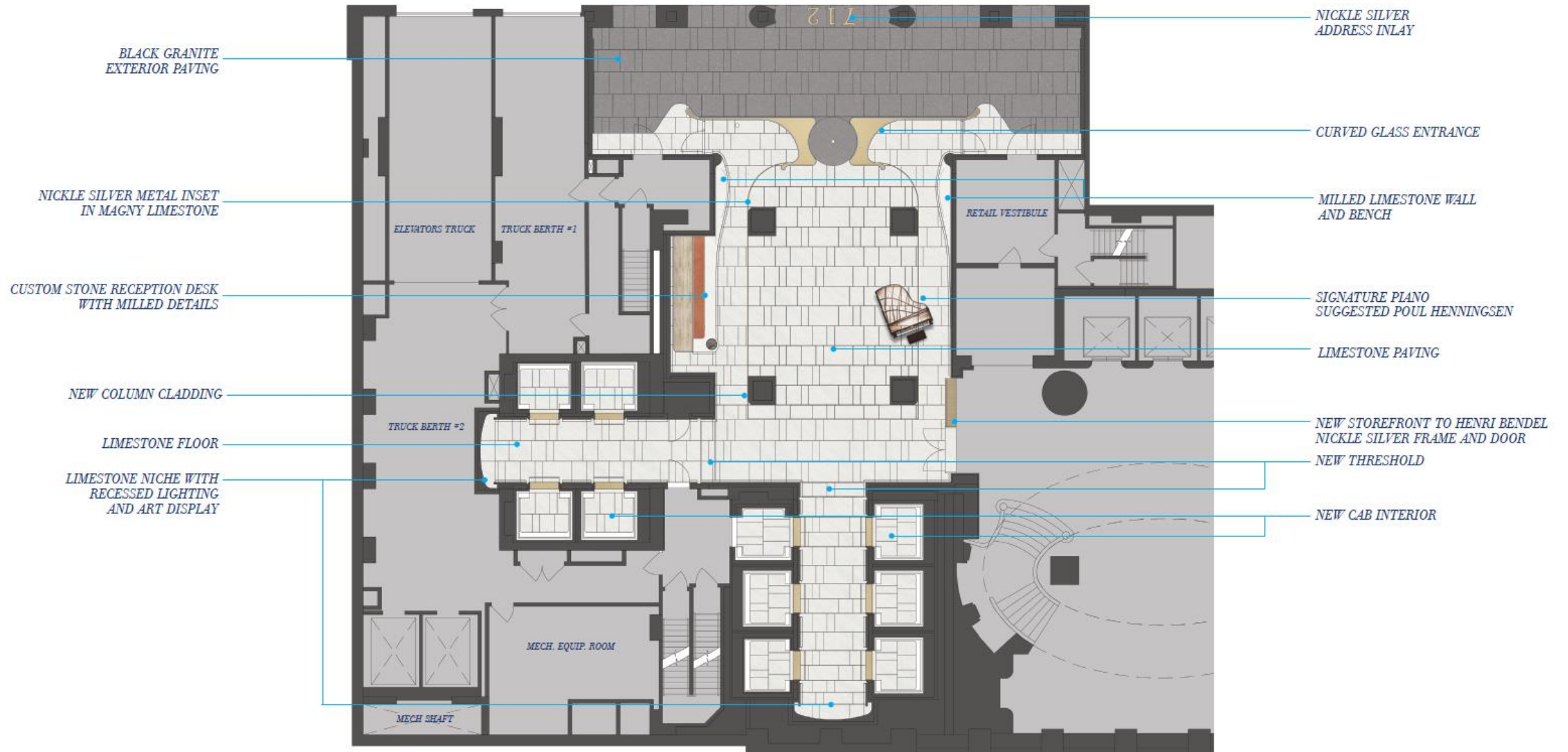
CONCEPT



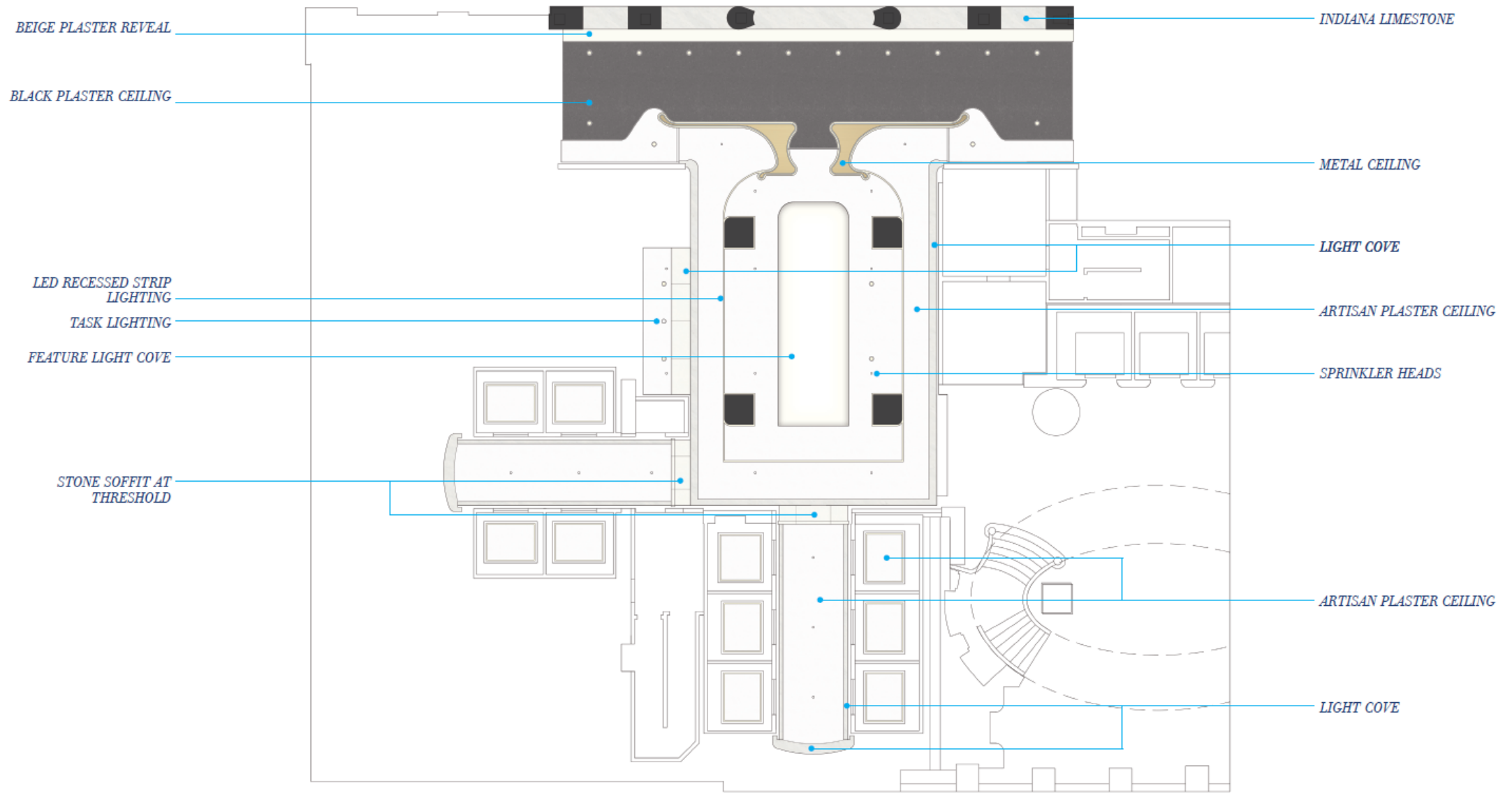
LOBBY ENTRY WITH NEW COLUMNS



ENTRANCE DETAIL PLAN



DETAIL PLAN



REFLECTED CEILING PLAN



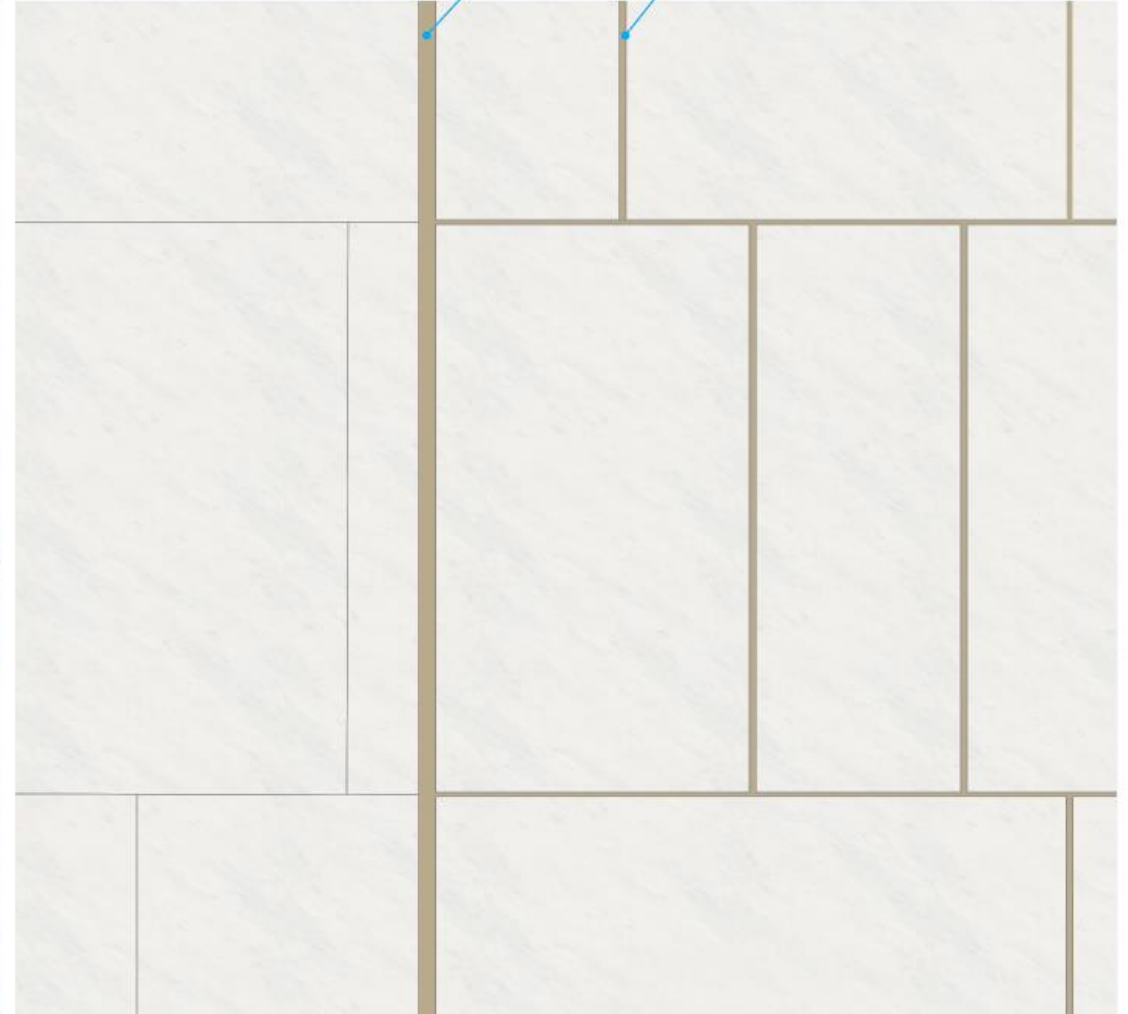
GLASS FACADE



GLASS FACADE AND SCULPTURAL STONE



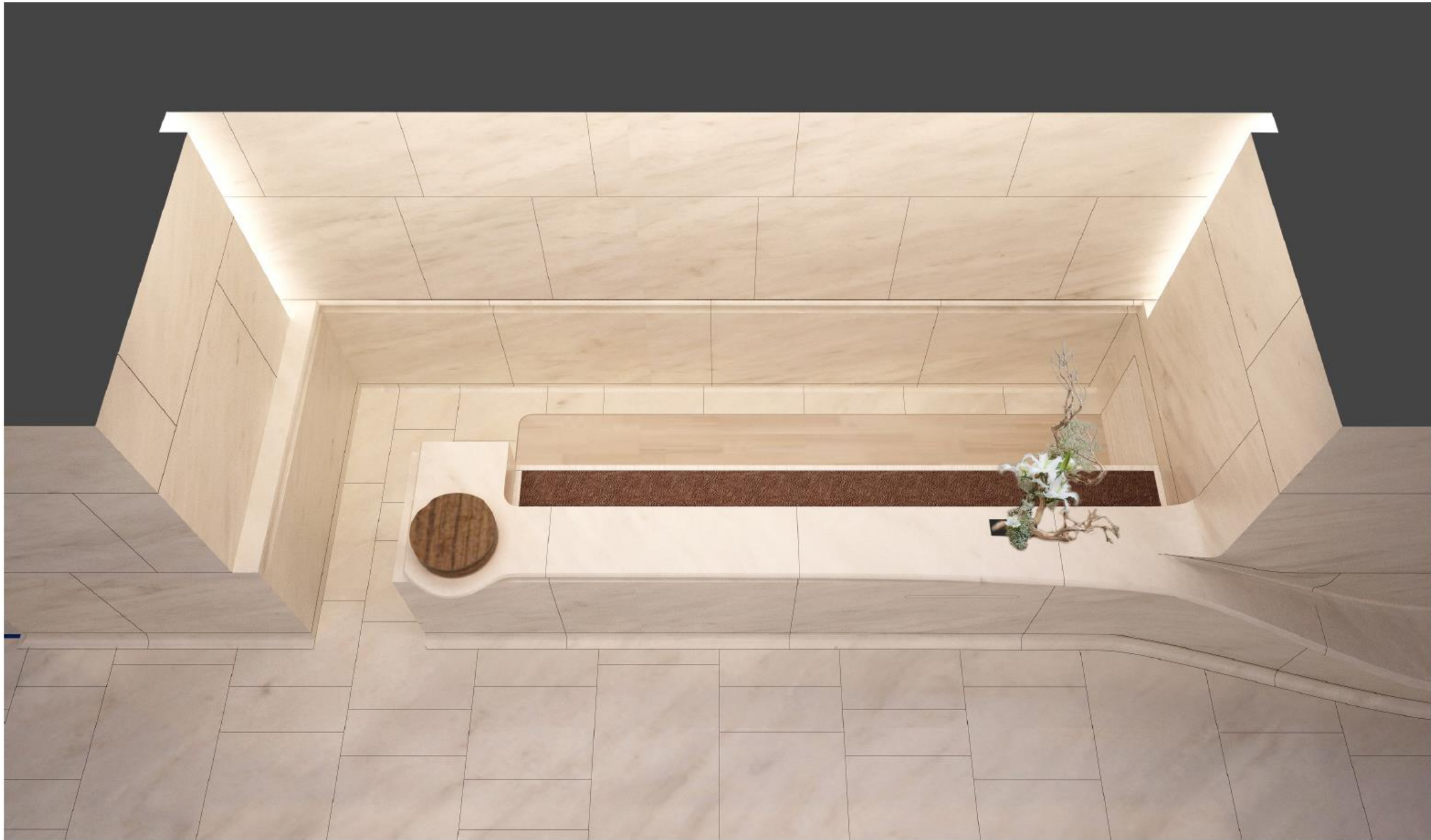
RENDERING- INTERIOR



UPDATED PAVING PATTERN



DESK WITH SEALED HONED LIMESTONE



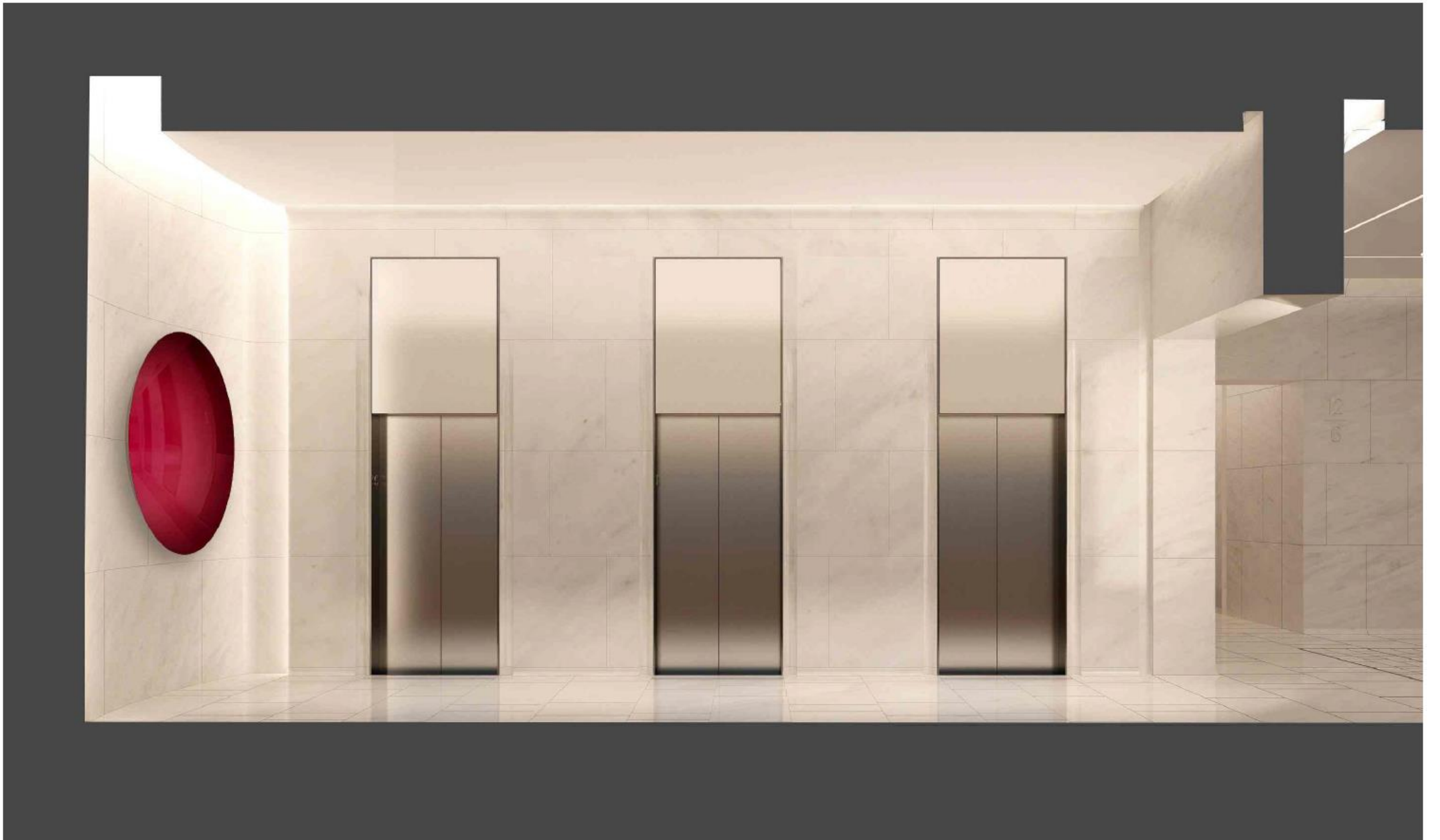
OVERHEAD VIEW OF DESK



ELEVATOR LOBBY THRESHOLD



ELEVATOR LOBBY



ELEVATOR LOBBY SECTION



ELEVATOR CAB ENTRY



ELEVATOR CAB INTERIOR



RENDERING- INTERIOR

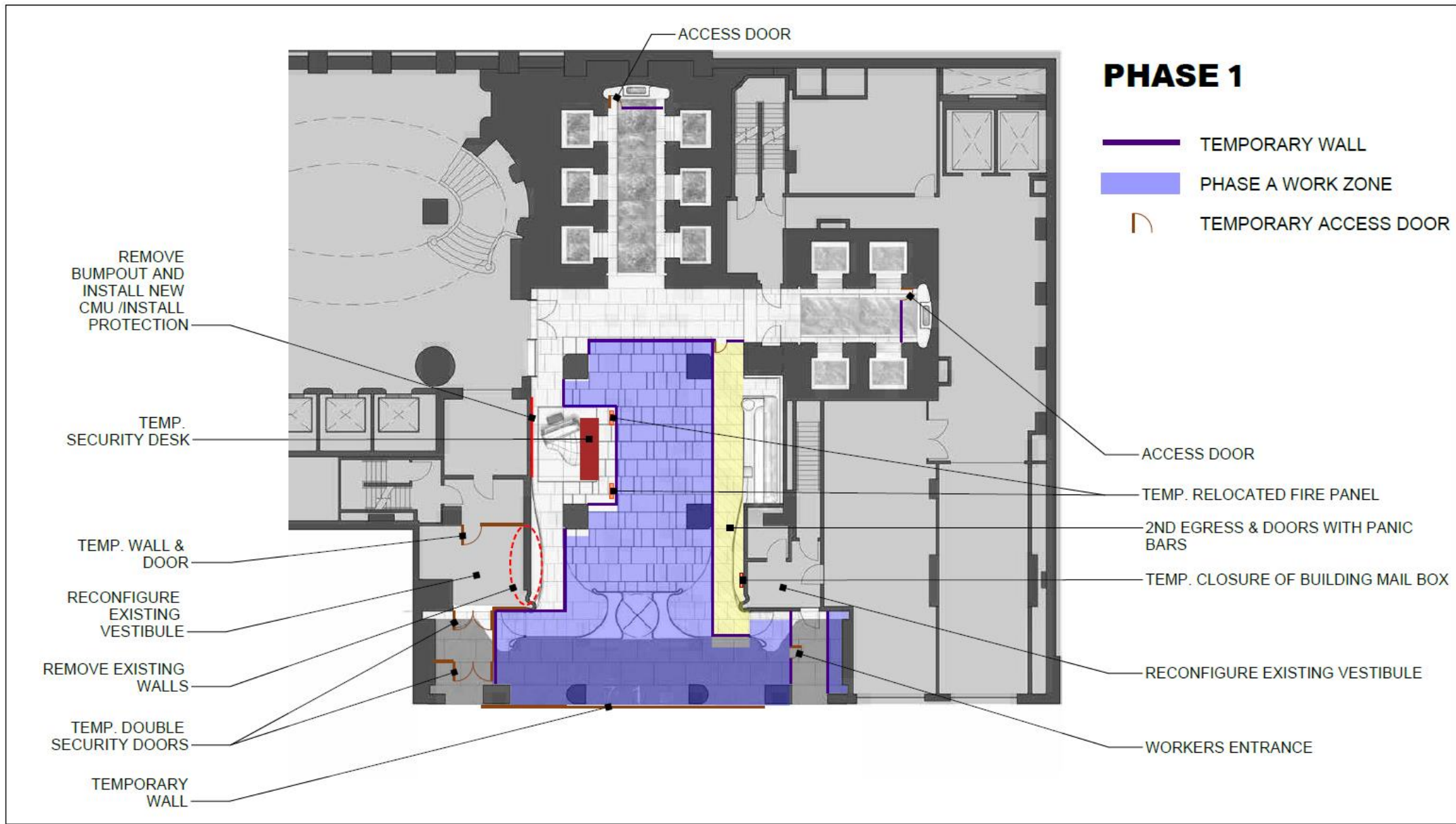


MATERIAL PALETTE

AECOM TISHMAN

Robert Edelman, Director

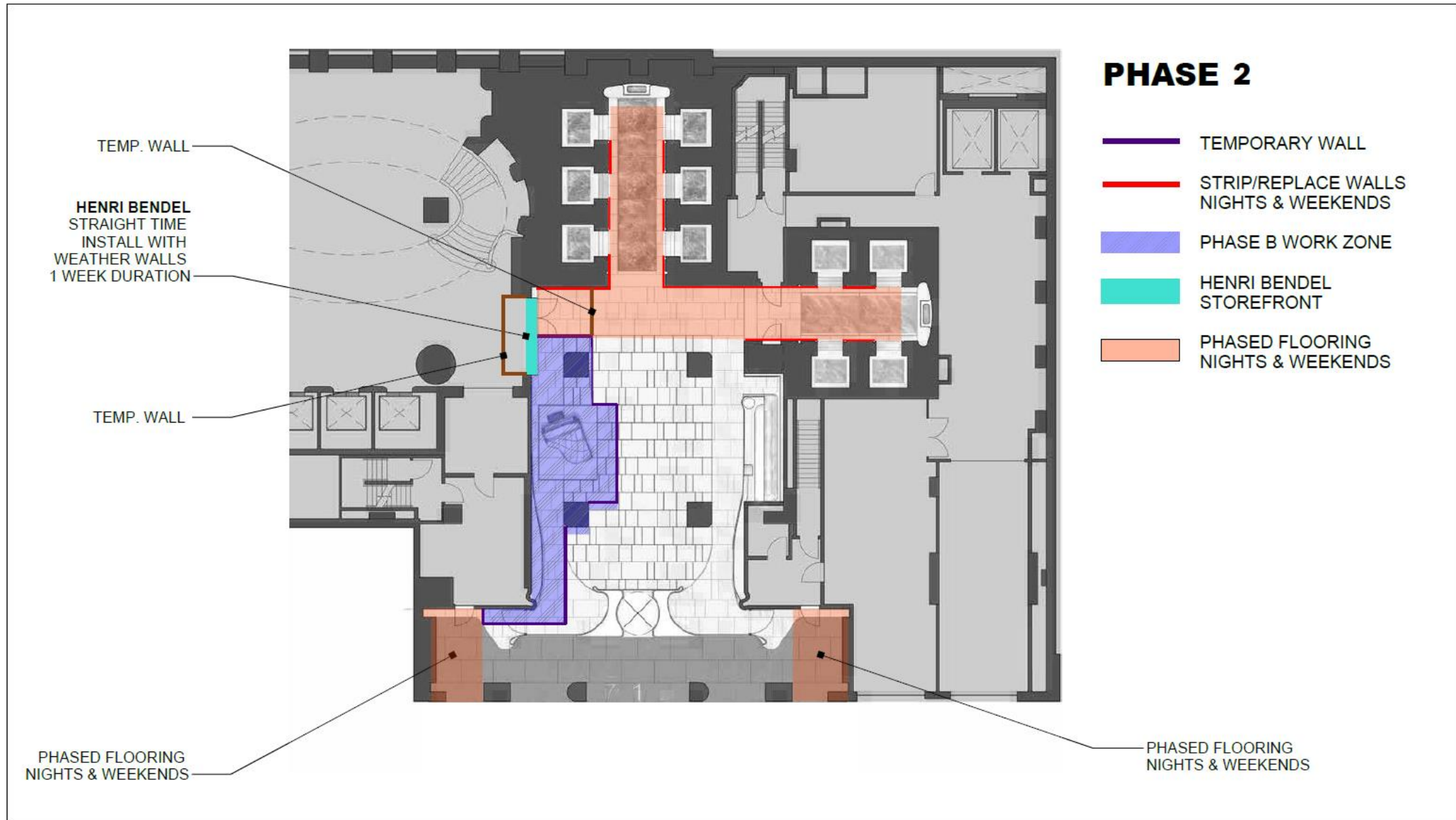
Jason Boucher, Project
Manager



**PHASE 1
PRELIMINARY LOGISTICS PLAN**

AECOM TISHMAN
712 FIFTH AVENUE

REVISIONS		
MM/DD/YY		REMARKS
01/29/18	A.Nabus	NOT-TO-SCALE
04/09/18	A.Nabus	(Revised)
04/10/18	A.Nabus	(Revised)
05/31/18	A.Nabus	(Revised)
06/11/18	A.Nabus	(Revised)



**PHASE 2
PRELIMINARY LOGISTICS PLAN**

AECOM TISHMAN
712 FIFTH AVENUE

REVISIONS		
MM/DD/YY	REVISIONS	REMARKS
01/29/18	A.Nabus - NOT-TO-SCALE	
04/09/18	A.Nabus (Revised)	
04/10/18	A.Nabus (Revised)	
05/31/18	A.Nabus (Revised)	
06/11/18	A.Nabus (Revised)	

SCHINDLER

Winans Largacha, Project Manager

Matt McQuillen, Field Superintendent



PORT Technology
712 5th Ave



Schindler

Agenda

1. PORT technology
2. PORT features
3. Overall operation – Q&A
4. Questions

PORT technology

Easy as 1, 2, 3

Please click the link below for a short video:

<https://youtu.be/Q8aaz3NTvgg>

PORT

Features

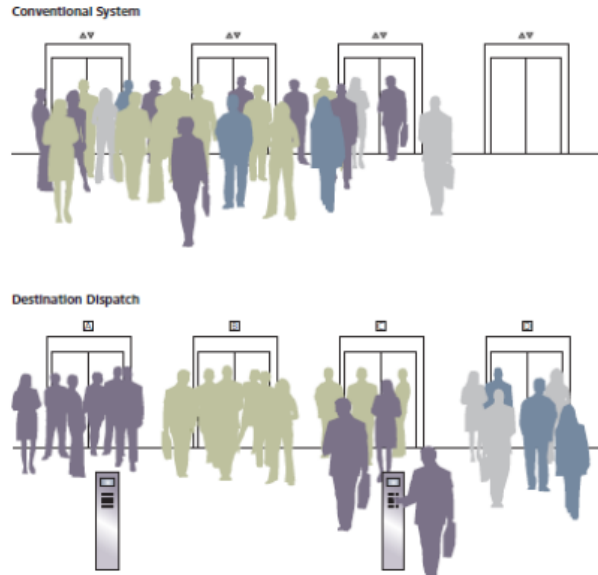


Overall operation

PORT

How does a destination-dispatch elevator system work?

- With a destination dispatch system, users tell the elevator system where they want to go, before they enter the elevator. This allows the system to assign passengers going to like destinations in the same elevator, thus reducing wait time. It also limits the number of times passengers stop prior to reaching their destination. As a result, passengers arrive at their desired floor in less time.

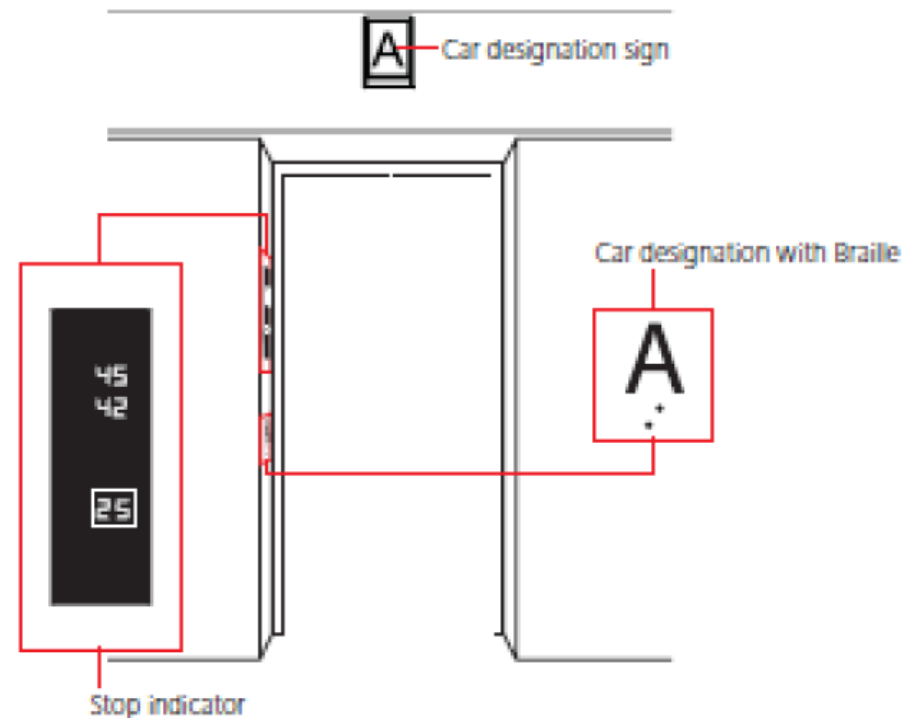


Overall operation

PORT

How do I call an elevator?

- There is at least one PORT touchscreen located in the elevator lobbies on each floor.
- Press the number of the floor you are travelling to
- Wait for the screen to allocate the elevator you'll be taking
- Double-check destination floor in the screens located in the entrance of the car
- Enjoy the ride



Overall operation

PORT

I was traveling to the same floor as other people but was assigned a different elevator to take?

- Destination-dispatch systems are designed to group people as much as possible. It may happen that multiple calls to the same floor are assigned different elevators. This can be for many reasons. The first assigned car may have too many people either assigned from another PORT device or there may be too many people already inside the assigned car. The system would then assign a different car to the next call from that floor that has more room in the car. Whenever possible, each person traveling in a party should input his or her own call so that the system knows how many people are in each elevator

Q & A

THANK
YOU!

Paramount Group, Inc.